

HYDROTEC

DRAINAGE CHANNELS

SYSTEM HYDRO*line* PRO

Ultra-flat and easy installation

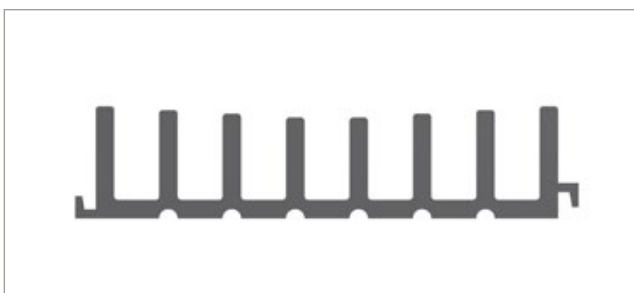


SYSTEM HYDROline PRO

Product benefits

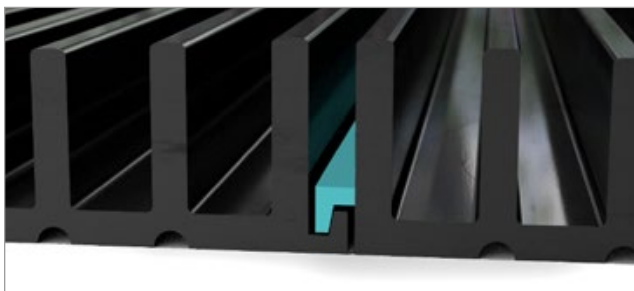
Barrier-free and powder coated

The 3-metre-long HYDROline PRO is designed for terraces, garages and car parks. The system is barrier-free (slot width 12 mm) and ideally suited for pedestrians.



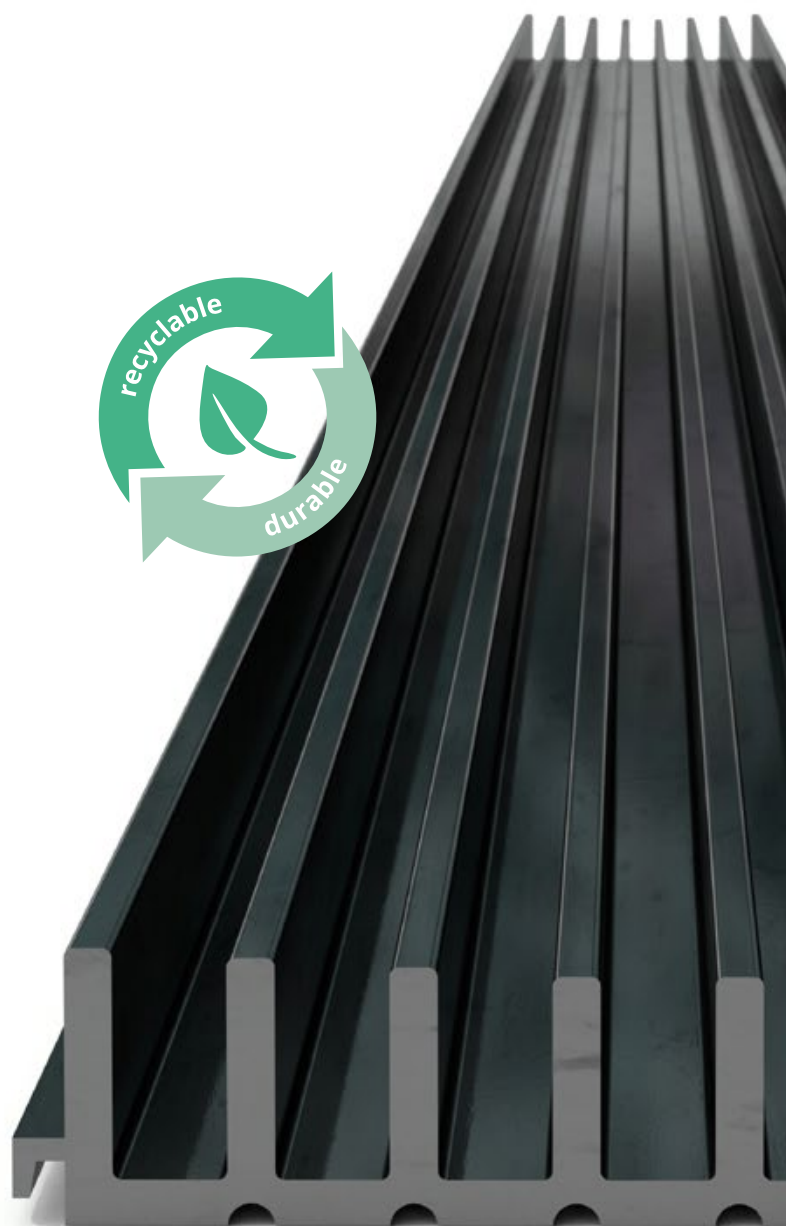
Ultra-flat and easy installation

The low installation height of 30 mm allows easy installation without a large foundation.



Nominal width expandable

The channel can be fitted at the sides, allowing the nominal width to be extended as required.



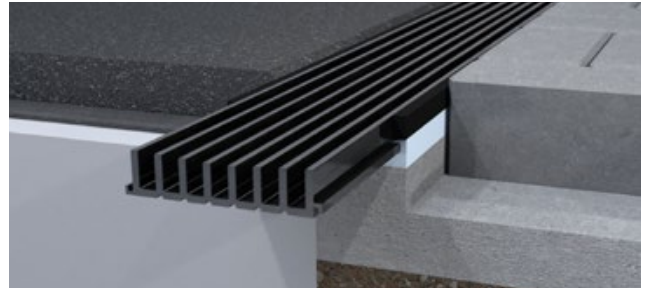
SYSTEM HYDROline PRO

Product benefits



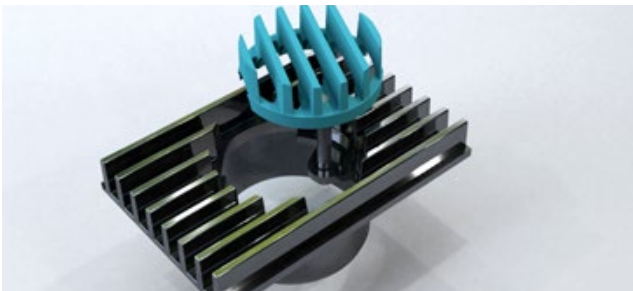
Concave arrangement

The concave arrangement of the slots serves to enhance the transport energy so that the water is well drained even on slight slopes.



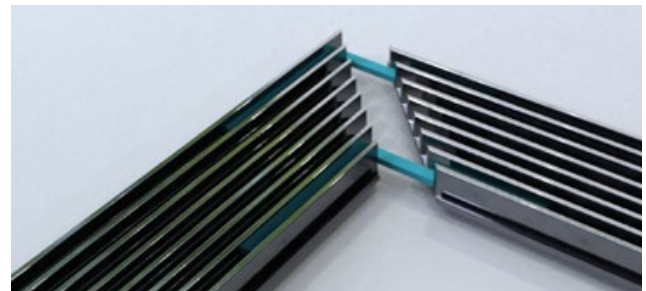
TYPE I

The channel does not require a concrete encasement and can be asphalted or paved directly up against. This offers architectural freedom.



Vertical outlet

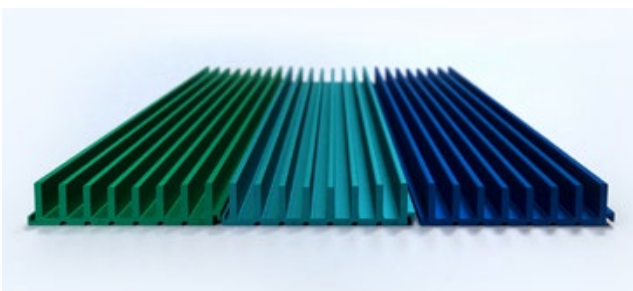
Vertical outlet with an easily removable grating and integrated connection für a outlet pipe (Ø100).



Special elements

HYDROline PRO provides special elements with installation aid for special areas, which simplified the installation.

- L element
- T element
- Intersection element



Available in different colours

The drainage channel is made of aluminium and powder-coated by default (RAL 9005 deep black). Uncoated or alternative colors are available on request- see - second last page.

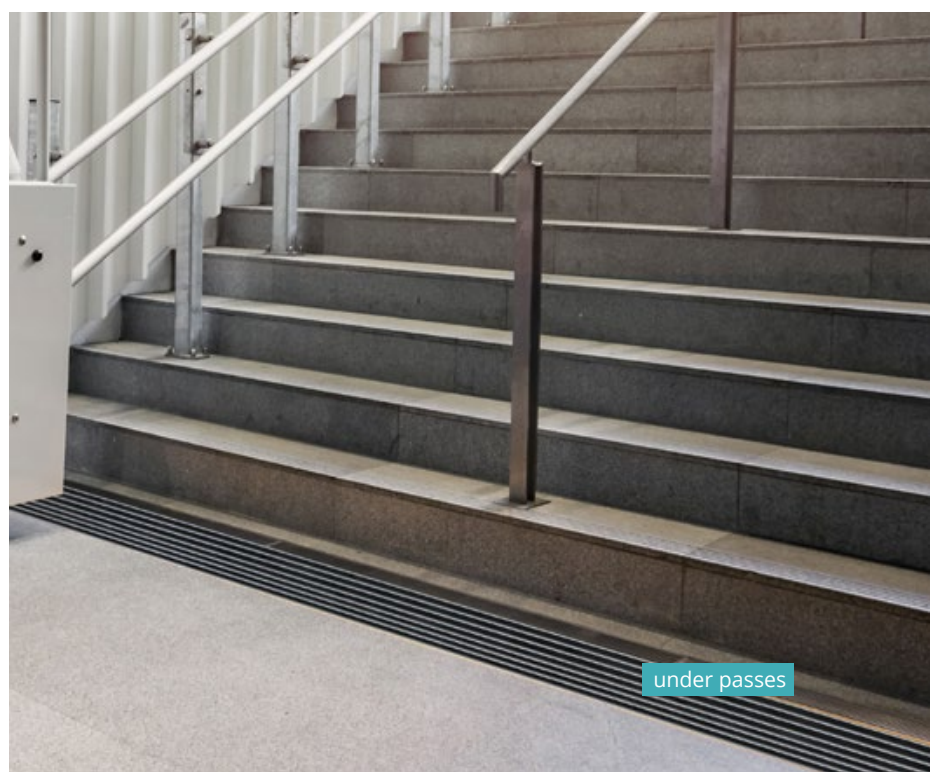
SYSTEM HYDROline PRO

Installation areas



SYSTEM HYDROline PRO

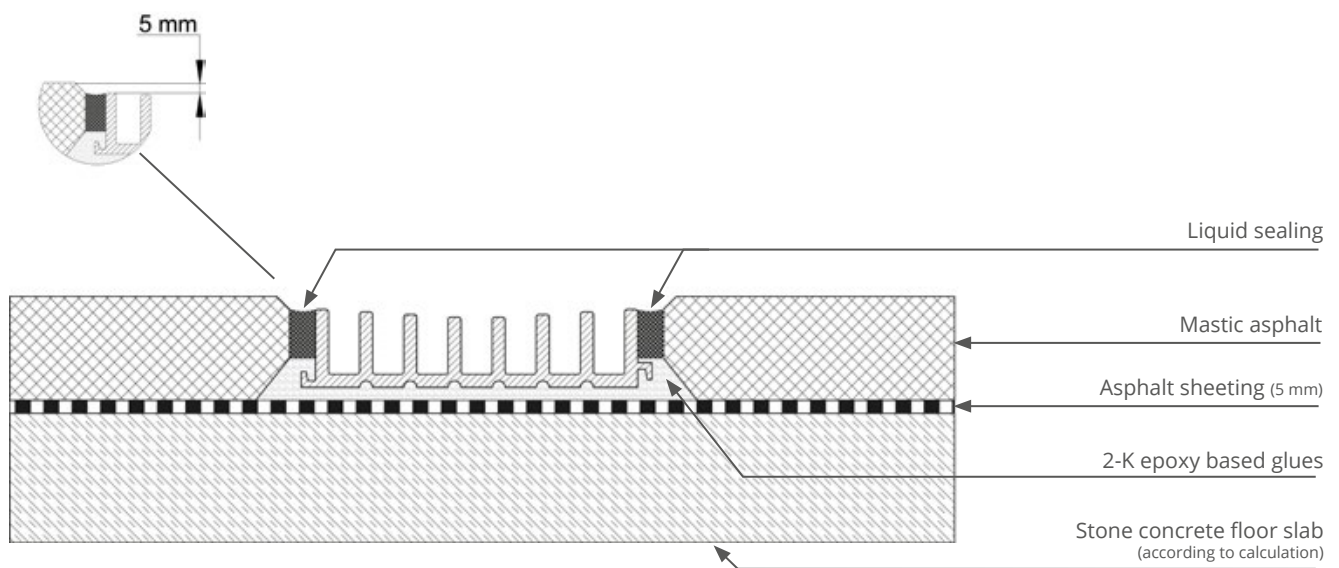
Installation areas



SYSTEM HYDROline PRO

Installation instruction

MASTIC ASPHALT



The drainage channel must be permanently seated approx. 5 mm lower than the adjoining surface.

Concrete according to calculation of the respective load class.

General notes

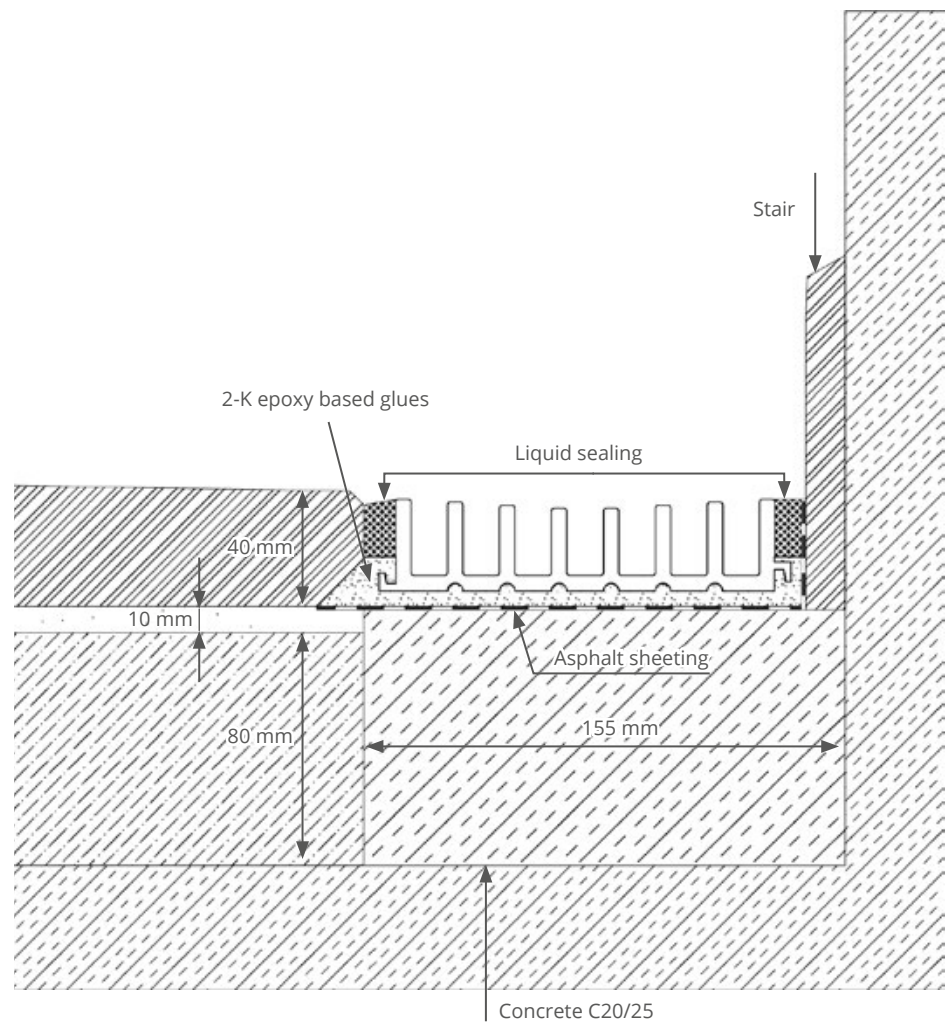
The installation instructions are only provided as a recommendation. The construction companies charged with installation can naturally incorporate any of their own improvements. The construction company is responsible for the correct installation of the drainage channels.

All installed parts must be examined before installation to ensure that they are undamaged. For reasons of liability never install damaged parts and contact the supplier immediately to submit a claim.

SYSTEM HYDROline PRO

Installation instruction

UNDERPASS/STAIR



The drainage channel must be permanently seated approx. 5 mm lower than the adjoining surface.

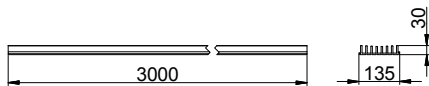
General notes

The installation instructions are only provided as a recommendation. The construction companies charged with installation can naturally incorporate any of their own improvements. The construction company is responsible for the correct installation of the drainage channels.

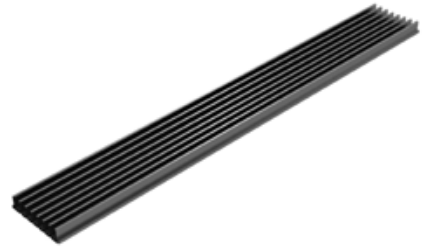
All installed parts must be examined before installation to ensure that they are undamaged. For reasons of liability never install damaged parts and contact the supplier immediately to submit a claim.

SYSTEM HYDROline PRO

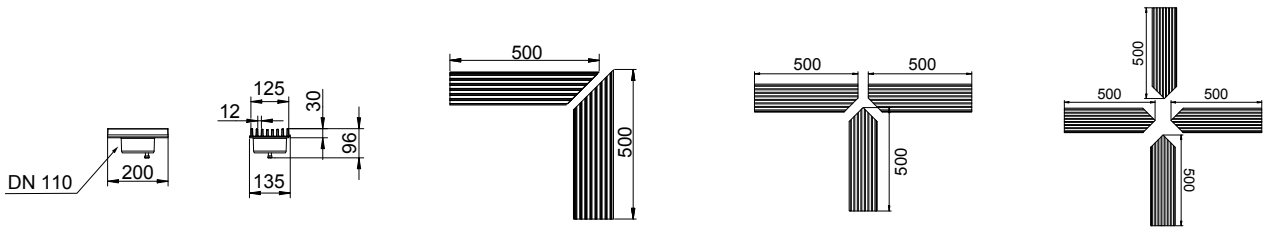
Class F 900



Basic element



| Type | Art. No. | Class | Nominal width mm | Height mm | Length mm | kg | Pallet |
|---------------|------------|-------|------------------|-----------|-----------|------|--------|
| Basic element | 680300004 | F 900 | 135 | 30 | 3000 | 12,6 | 20 |
| | 6803000041 | | | | 1000 | 6,3 | 40 |



Vertical outlet

L element






t element

Intersection element

| | | | | | | | |
|----------------------|----------|-------|-----|----|-----|-----|---|
| Vertical outlet | 68035020 | F 900 | 135 | 30 | 200 | 1,0 | - |
| L element | 7003750 | | | | 500 | 3,6 | |
| T element | 7003790 | | | | 6,0 | | |
| Intersection element | 7003780 | | | | 7,8 | | |

SYSTEM HYDROline PRO

Accessories

| Type | Art. No. | Height mm | |
|--------------------------------|----------|-----------|---|
| End piece | 7003700 | |  |
| Mounting support | 7003701 | |  |
| Mounting support with pedestal | 7003704 | 300 |  |
| Connection element | 7003702 | |  |
| Cleaning claw | 7003730 | |  |

End piece

Mounting support

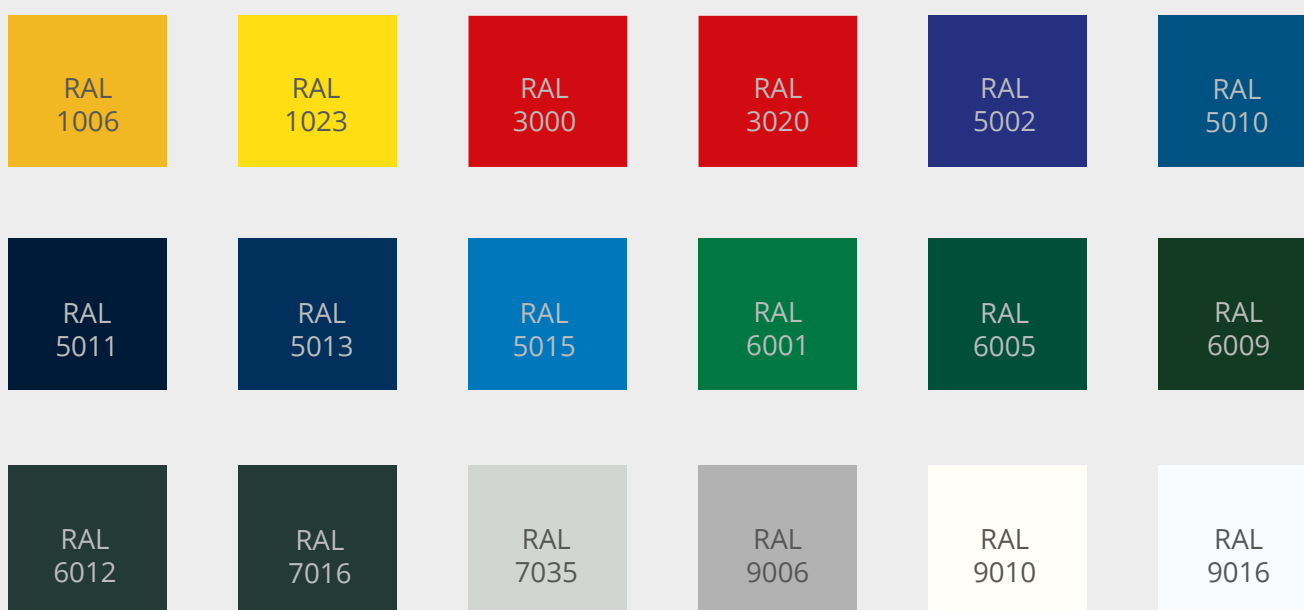
Mounting support
with pedestal

Connection element

Cleaning claw

SYSTEM HYDROline PRO

Standard colours



| | | |
|-----|------|------------------|
| RAL | 1006 | Cornyellow |
| RAL | 1023 | Traffic yellow |
| RAL | 3000 | Fire red |
| RAL | 3020 | Traffic red |
| RAL | 5002 | Ultramarine blue |
| RAL | 5010 | Gentian blue |
| RAL | 5011 | Steel blue |
| RAL | 5013 | Cobalt blue |
| RAL | 5015 | Sky blue |
| RAL | 6001 | Emerald green |

| | | |
|-----|------|-----------------|
| RAL | 6005 | Moss green |
| RAL | 6009 | Fir green |
| RAL | 6012 | Black green |
| RAL | 7016 | Anthracite grey |
| RAL | 7035 | Light grey |
| RAL | 9006 | White aluminium |
| RAL | 9007 | Grey aluminium |
| RAL | 9010 | Pure white |
| RAL | 9016 | traffic white |




HYDROTEC Technologies AG
Düngstruper Strasse 46
27793 Wildeshausen
Germany

 office@hydrotec.com

 www.hydrotec.com

 +49 4431 9355-0

 +49 4431 9355-99